

MEMBERS INFORMATION GUIDE 2026



HISTORY

Killarney Country Club formerly known as Transvaal Automobile Club (TAC), was formed in 1903 to foster 'automobilism'. This was its primary function until 1930, when the duties of 'protecting, fostering and promoting motor interests' was passed to The Automobile Association of South Africa. In 1911 the club moved to Cooke's Farm in Killarney and from then on developed its sporting and social facilities. In 1970, as a result of the requirements of the Johannesburg City Council for the North-South Expressway, the club moved to its present location in Houghton.

Killarney Country Club is one of the most prestigious clubs in Johannesburg, strategically situated near the M1 Motorway. KCC has ample parking, good security, and offers many outstanding facilities. Over the years many of our holes have been reshaped and rebuilt, new tee positions were added, while existing water hazards were cleared and extended. Fantastic new water features were also added at several holes. The changes have made the club one of the most challenging and beautiful courses in South Africa and we are rated annually in courses of South Africa.

Killarney has played host to the many tournaments over the years and has proven to be a worthy championship Golf Course. The club has had a wonderful history and with the foresight and efforts of previous and current committees we are prepared to continue our proud heritage into the years ahead.

THE MANAGEMENT TEAM

The management at the club are here to ensure that your time spent at the club is as enjoyable as possible.

Kylene Raubenheimer

Head of Business Development & Memberships

JC Kinnear

Head of Accounts

Chris Martiens

Head of Marketing

Renier Uys

Head Maintenance

Willie Kanduwa

Head of Events & Banqueting

Adrian Roets

Head of Food and Beverage

Nieuwoudt Hendrikse

Head of Golf

Rudie Nortje

Head of Greens and Grounds

THE MANAGEMENT COMMITTEE

The members of the management committee are elected at the Annual General Meeting, serving the club as dedicated volunteers to ensure the club is able to grow in a happy and healthy environment.

Darryn Faulds

Club President,
Committee Member

Justin Phillips

Vice-President,
Committee Member

Michael Mgodeli

Club Captain
Committee Member

Keith Benjamin

Bowls Chairman,
Committee Member

Marki Strydom

Committee Member

Bridget Rodrigues

Ladies Golf Captain

RULES AND CONSTITUTION

In order to ensure a peaceful and friendly co-existence amongst our many members with their different needs and expectations, it is necessary for the club to be governed by a constitution and rules. To receive a copy of the constitution, please do not hesitate to contact Kylene at the club.

THE PROSHOP

Nieuwoudt, our Resident Professional with his friendly staff, Brendan Walsh, Raymond and Brent in the Pro Shop are more than willing to assist you with all your golfing requirements – 011 442 3880.

The Pro Shop stocks the latest and greatest in golf equipment and golf apparel.

- Club Fitment and Assessments
- Golf Lessons
- Club Repairs and Re-gripping
- Rental of Clubs
- Corporate Clothing and Gift Packs

PRACTICE FACILITIES

The club boasts adequate practice facilities, with a view to improving and upgrading the current ones. We have short game facilities and a warmup area for shots up to 180 meters and a large putting green that is in pristine condition and is only for putting on. All chipping is to take place down at the chipping green.

A bucket of balls can be purchased from the Pro Shop at a cost

Members-R30 for 30 balls

Visitors R50 for 30 balls

The range is open Tuesday - Sunday from 06:30 - 17:00.

DUE DATE FOR ANNUAL SUBSCRIPTIONS

Annual subscriptions will be invoiced to you every year in November. These subs are due and payable by 1 January or the current month of signing. Should you at any time have a query with the prompt payment of your subscriptions, please contact the membership manager or accounts department. We will be able to assist you as best we can with any other arrangement for payment.

Debit orders are available at an additional charge of R90 per month over a period of 10 months with 1 February being the first date. Please note the first month's debit order includes affiliation fees and subs combined.

RESIGNATION OR CHANGE OF MEMBERSHIP CLASS

All changes in membership type must be received before the 1st of January of each year. Changes after this date will be subject to pro-rata invoices to the date your correspondence is received. It is your responsibility to ensure that a letter of resignation/membership change is received by the club on time.

CHANGE OF ADDRESS

In order to keep our membership details up to date we request you to inform the club immediately about any change in your address, email, telephone number and other contact details. Please note that by signing up as a member you give us permission to reach out for any marketing related campaigns or membership related communication.

DEFAULTERS

All members who have not paid their subscriptions on time will be blocked from playing as a member until payment is made or an arrangement with Kylene or JC have been agreed upon.

HANDICAPPING

Handicapping with Killarney means that Killarney Country Club holds your profile at a compulsory charge of R280 per card per year. Once the member has signed up, a profile is created or transferred from the previous club, and a card is ordered. Once the card arrives from Cape Town, a notification will be sent to the member to collect the card at the pro shop. We consider this card as a member's card.

KILLARNEY CADDY ASSOCIATION

The Killarney Caddy Association is responsible for the management, training, and development of caddies at Killarney. All players taking a caddy are required to pay R50-00 for a caddy voucher at the green free point of sale. This voucher covers the cost of the caddies' funeral policy as well as a rain fund and laundry costs.

R50-00 is payable at registration for the caddy foundation fee and a minimum fee of R50-00 is payable to the caddy for his ½ way meal and a minimum of R300-00 is payable to the caddy at the end of your round.

Should you have any problems or questions regarding caddies please contact Emmanuel, our caddy manager, or the Golf Manager.

Benefits offered are:

- Caddies are controlled and managed in a professional manner.
- Caddies are provided with clean uniforms.
- Caddies receive a free funeral policy.

LOCKERS

The club offers lockers in the men's locker room, we are currently investigating the possibility of locker rooms in the ladies change rooms.

CLUB COMPETITIONS

The club organizes tournaments on Saturday and Sunday mornings, as well as Thursday and Saturday afternoons. A list of all the major tournaments will appear in the club diary. You will also be notified of all major tournaments via our electronic member newsflash and SMS from the club, on the app when booking or on all social media platforms. Some of the club's major tournaments include: Club Championships, Hymie Weiner Trophy, President's Cup, Jack Hoffmann Trophy, John Brick, Doubles and Singles Knockouts.

Should you or your company be interested in sponsoring one of our tournaments we would be most grateful. Please contact Kylene or Nieuwoudt to organize.

LADIES SECTION

The club is proud to boast a Ladies Section under our Lady Captain, Bridget. Our ladies play in the club competitions. We also host the Open Mixed where a minimum of 2 ladies are required per four-ball. Open Mixed is played on selected Sundays throughout the year.

Should you have any queries about Ladies Membership please do not hesitate to contact Kylene.

JUNIOR SECTION

Our recent efforts to grow our Junior Section have received great rewards and we now offer great opportunities for our Junior Golfers to flourish. We are constantly looking to sign up more juniors as they are the future of KCC. We compete very successfully in Junior Better ball league. Our Golf team would be happy to offer any advice regarding Junior Golf and can be contacted through the club.

GOLF OPERATING TIMES

9 Holes

AM: 05h30 - 06h30 (Tuesday- Friday and Sundays)

PM: After 15h30 (Tuesday - Sunday)

18 Holes

AM: 06h34 - 08h22 (Tuesday - Sunday)

PM: 11h13 - 12h52 (Tuesday - Sunday)

Corporate groups are booked during the week and are a large benefit to the club. They help us keep membership costs down while continuing to improve our facilities. We always do our utmost to ensure that times are reserved for members however should we be full, we will endeavor to get you a booking at a neighboring club - please speak to Nieuwoudt in the golf office.

9 HOLES

Nine holes of golf are permitted after the field has turned on weekday or weekend afternoons, it is advisable that you contact the club to confirm approximate times that the field will turn (normally 15h30). Bookings are available for 9 holes; players are welcome to book online or on the Club Master App.

BEHAVIOUR AND ETIQUETTE

It is unacceptable for players to shout loudly, swear loudly or throw clubs or use any other abusive language both on the course and in the clubhouse area. Any complaints will be investigated, and disciplinary action taken. Please take care of the ground you play on by repairing pitch marks and filing divots with sand. No guests of golfers are to walk the course as this is a danger to themselves and other golfers.

MOTORISED CARTS

Killarney offers a fleet of 32 EZGO carts with advanced GPS units on every cart to ensure the best possible golfing experience. Visitors are permitted to bring their own carts however there is a trail fee applicable.

Members:

18 Holes: R420

9 Holes: R250

Visitors:

18 Holes: R480

Holes: R280

BOOKINGS

Timesheets for golf games are opened every Wednesday morning for the forthcoming week i.e, 14 days in advance. Block bookings are allowed, each players/members name is to be submitted for a booking to be made.

Bookings can be made by phoning the Club switchboard on 011 442 7411 or the direct line to the golf office which is 011 442 3880. When booking, you are required to give all four members names (initial and surname). Please note that one caller may only book one four-ball at a time. Internet bookings are available from 00h00 on Wednesday. Please download the clubmaster app or log on to our website to utilize the booking portal.

GROUP BOOKINGS

Group bookings will be accommodated on Tuesdays, Wednesdays and Fridays and Sunday afternoons. Thursdays will be reserved for members and their guests; however, permission will be granted from Nieuwoudt only for outside groups to play. We will do our utmost to try and accommodate members on days booked for groups and should we be unable to, we will endeavour to make alternative arrangements for our members. Please contact the golf manager in this regard. It must be noted that there are peak periods during the year at Killarney Country Club and most Gauteng Clubs.

CANCELLATION POLICY

Cancellations must be made 48 hours in advance. All cancellations made after the 48-hour period will result in the player being charged playing fees. Frequent cancellations will result in further disciplinary action. The first player booked will be responsible for the four-ball.

LATE ARRIVALS

Players that arrive late may be accommodated at the back of the field at the discretion of our golf team. Alternatively, if a four-ball is awaiting one player then they may tee off without the late player and the late player will be permitted to join their group on the course.

VISITORS POLICY

As a general rule visitors are not permitted on a Saturday at all unless receiving an invitation from a member. Special permission for a visitor may be granted by the Golf Director or Captain. Full guest of members fees are applicable.

SPEED OF PLAY POLICY

In a four-ball field the first tee time is required to finish in 4 hours 20 minutes with all other four-balls being required to complete their rounds (including halfway) in 4 hours 30 minutes. Any four-ball that is more than 15 minutes behind the four-ball in front of them will be required to either: a) Miss out halfway house completely b) Pick up their balls and move to the next tee

TIPS TO SPEED TO UP PLAY

- Always ensure that you keep up with the four-ball in front of you, not the four-ball behind you
- Ready yourself to play before your turn to play and not only when it is your turn to play
- Walk briskly between shots - your body will enjoy the exercise
- Play the competition - if it is an alliance and you can not improve on your team score pick up
- We encourage "Ready Golf" to increase pace of play.
- Consider others behind you.

Any player that refuses to co-operate with the marshals could be asked to leave the course.

WHO MAY PLAY WHEN

Your membership category may impose restrictions on when you may play which is controlled through our computerized green fee collection system.

- Weekday Members: have playing rights Tuesday - Friday and Sundays
- Full-week Members: have playing rights Tuesday - Sunday

WHO PAYS TO PLAY, WHO DOES NOT

Your membership category may impose restrictions on whether you pay to play or not.

Limited Membership:

Player still pays to play (from R150 for 9 holes; from R250 for 18 holes)

Unlimited Membership:

No green fees will apply to your round.

(Both categories will need to pay levies.)

GOLF MEMBERSHIP | MALE MEMBERS

Golf Male Membership Subscription 2026	Junior 4-19yrs	Student 20-25yrs	Young Professional 20-30yrs	Full member 31-35yrs	Full member 36-40yrs	Full member 41-50yrs	Full member 51-64 yrs	Full member 65+yrs
Full Member Limited				R 10 800	R 12 900	R 14 500	R 17 900	R 14 900
Full member Unlimited	R 3 300	R 10 500	R 14 500	R 17 900	R 20 900	R 23 500	R 28 500	R 23 500
Weekday + Sunday Member Limited				R 9 200	R 10 200	R 13 000	R 14 900	R 12 700
Weekday + Sunday Member Unlimited				R 13 800	R 15 000	R 18 900	R 23 700	R 21 100

GOLF MEMBERSHIP | FEMALE MEMBERS

Golf Female Membership Subscription 2026	Junior 4-19yrs	Full Member 19-40yrs	Full Member 41-64yrs	Full Member 65 + yrs
Full Member Limited		R 7 500	R 10 900	R 7 200
Full member Unlimited	R 3 300	R 10 800	R 19 900	R 14 400
Weekday + Sunday Member Limited		R 5 400	R 8 300	R 5 700
Weekday + Sunday Member Unlimited		R 6 700	R 16 990	R 12 400

BOWLS MEMBERSHIP

Lawn Bowls Membership Subscription 2026	Male	Female
	R2 000	R 2 000

SOCIAL MEMBERSHIP

Social Membership Subscription 2026	Social Membership
	R 3 300

ADDITIONAL FEES

Additional Fees	Staff Levy Additional Member	Affiliations Central Gauteng Golf	Affiliations JHB Bowls	Handicap SA Golf Members	Replacement Membership card	Debit order fee
Male	R 540	R 750	R 650	R 300	R 180	R 90
Female	R 540	R 700	R 650	R 300	R 180	R 90
Junior	R 540	R 440	R 650	R 300	R 180	R 90
Additional Fees Optional	Petrol Cart Storage	Electric Cart Storage	Shade Port Parking			
	R4 500	R8 000	R3 700			

GREEN FEES | TUESDAY - THURSDAY

Day	Category / Holes	Player Type	2026 Visitor Rate	2026 Member Rate
Tuesday	18 HOLES	ADULT	355	260
Tuesday	18 HOLES	STUDENT	270	-
Tuesday	18 HOLES	JUNIOR	160	-
Tuesday	SUNRISE/9HOLES	ADULT	180	150
Tuesday	SUNRISE/9HOLES	STUDENT	140	-
Tuesday	SUNRISE/9HOLES	JUNIOR	100	-
Wednesday	18 HOLES	ADULT (AM)	355	260
Wednesday	18 HOLES	STUDENT	270	160
Wednesday	18 HOLES	JUNIOR	160	-
Wednesday	SUNRISE/9HOLES	ADULT	180	-
Wednesday	SUNRISE/9HOLES	STUDENT	140	-
Wednesday	SUNRISE/9HOLES	JUNIOR	100	-
Thursday	18 HOLES	ADULT (AM)	355	260
Thursday	18 HOLES	ADULT (PM)	450	290
Thursday	18 HOLES	GUEST OF MEMBER	420	-
Thursday	18 HOLES	STUDENT	320	-
Thursday	18 HOLES	JUNIOR	270	-
Thursday	SUNRISE/9HOLES	ADULT	180	160
Thursday	SUNRISE/9HOLES	STUDENT	140	-
Thursday	SUNRISE/9HOLES	JUNIOR	100	-

GREEN FEES

FRIDAY - SUNDAY

Day	Category / Holes	Visitor Type	2026 Proposed Fee (R)	Member Rate 2026 (R)
Friday	18 HOLES	ADULT (AM)	400	260
Friday	18 HOLES	STUDENT	270	-
Friday	18 HOLES	JUNIOR	230	-
Friday	SUNRISE / 9 HOLES	ADULT	180	-
Friday	SUNRISE / 9 HOLES	STUDENT	140	-
Friday	SUNRISE / 9 HOLES	JUNIOR	100	-
Saturday	18 HOLES	ADULT	610	420
Saturday	18 HOLES	GUEST OF MEMBER	495	-
Saturday	18 HOLES	STUDENT	450	-
Saturday	18 HOLES	JUNIOR	450	-
Saturday	9 HOLES - AFTERNOON	ADULT	230	160
Saturday	9 HOLES - AFTERNOON	STUDENT	150	-
Saturday	9 HOLES - AFTERNOON	JUNIOR	120	-
Sunday	18 HOLES	ADULT (AM)	610	420
Sunday	18 HOLES	ADULT (PM)	450	360
Sunday	18 HOLES	GUEST OF MEMBER	495	-
Sunday	18 HOLES	STUDENT	300	-
Sunday	18 HOLES	JUNIOR	250	-
Sunday	9 HOLES	ADULT	230	160
Sunday	9 HOLES	STUDENT	150	-
Sunday	9 HOLES	JUNIOR	120	-

CLUB FACILITIES

THE GYM ON 5TH

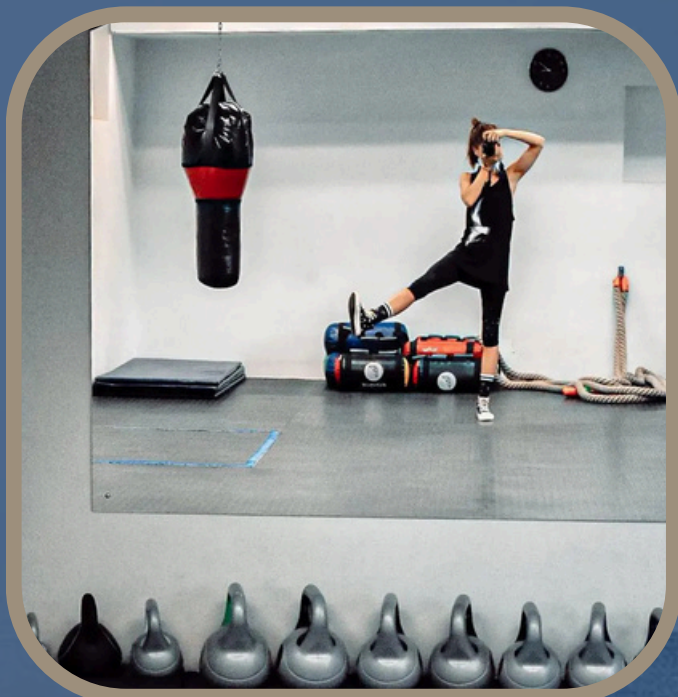
A boutique gym with personal trainers, bio kineticists, sports massage, boxing and much more on offer. As a member you have access to this facility free of charge, please go visit them, complete the necessary paperwork and they will issue you with an access card.

Operating times

Monday- Thursday: 05h30-20h00

Friday: 05h30-19h00

Saturday and Sunday: 06h00-13h00



Contact Details

Jason: 0842358136

Mischa: 0829290980

David: 0834555941

CRESULTS FITNESS BOXING

Unleash your inner champion at CResults Fitness Boxing, your ultimate destination for a dynamic 45-minute fitness experience! Since 2018, we've been serving Gauteng with a powerful blend of Boxing, Weights, Functional Training, and HIIT, all enhanced by Smart Fitness Technology. Regardless of your age, shape, or current fitness level, our workouts are designed to empower you. Track your progress with our innovative fitness technology, measuring your individual punch output to help you achieve realistic goals. Experience the thrill of a results-driven workout in a supportive and intimidation-free environment. Join us and transform your fitness journey!

Located in the premium boutique style **GymOn5th at Killarney Country Club.**



Operating times

Monday- Thursday: 05h30-20h00

Friday: 05h30-19h00

Saturday and Sunday: 06h00-13h00

BOWLS

With 2 bowling greens available and they are in high demand with corporate fun days! Book a bowling green through our Events Department or Kylene.

KCC can provide coaches and bowls equipment



Corporate games for team building, as well as private bowls games, are available on request and all equipment can be provided.

Contact Details

Keith: 083 375 3538

keithb@sprayon.co.za

NEXT POINT TENNIS

Step onto a surface played on by legends. NextPoint is Gauteng's only venue offering a world-class clay court — delivering a unique feel, pro-level slide, and match-ready bounce. Whether you're chasing the European experience or ticking off a tennis bucket list, this is your court.

Contact Details

Ross: 083 454 4212

www.nextpointtennis.com

Step onto a surface played on by legends.



PADEL

The most beautiful Padel Facility in the area. Situated at the majestic Killarney Country Club, We have indoor and outdoor courts nestled next to a world class golf course. KCC Padel is a place you will definitely want to be in with a Kids Play Area and a terrace that allows you to look over your kids whilst watching games of Padel on our three outdoor courts. Enjoy refreshments and light snacks from our Padel Shop and kit yourself out if you need any accessories or equipment.

KCC is home to the Ten by Twenty Padel Club, which boasts three floodlit Padel tennis courts. KCC Members receive ease of access to the padel courts and receive discounts through Discovery Vitality if you are a member. Book a game through the Playtomic app any day of the week.

For more information, contact
Shardi 0829218951 or Jordyn 0828258940



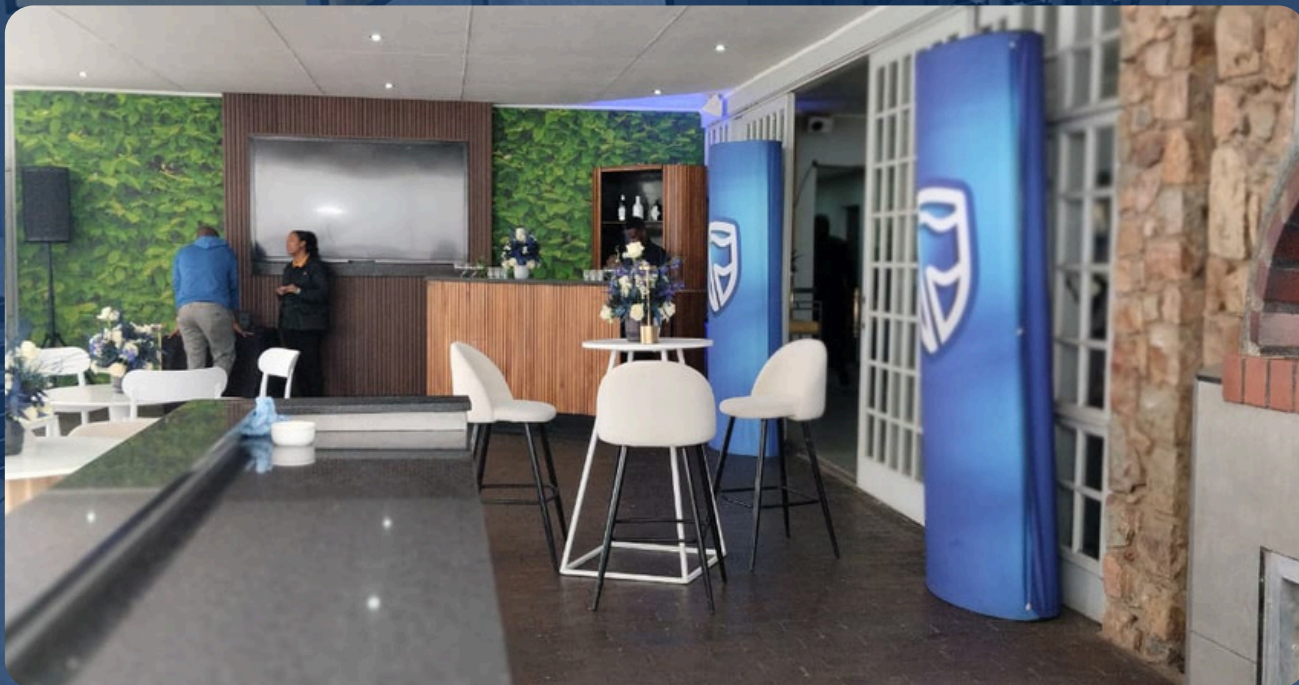
TERRACE RESTAURANT (MAIN BAR)

Serving members and guests with delicious food and drinks throughout the day, while overlooking the 18th hole with its water features, birdlife, and forest lined fairways. The Terrace Restaurant & Bar is the ideal venue to relax while enjoying breakfast, lunch and dinner Tuesday through to Sunday.



1903 SPORTS BAR

Serving members, guests, and padel enthusiasts with delicious food and drinks, 1903 offers a relaxed and vibrant setting overlooking the 18th hole. With a mega screen showcasing all major sporting events, it's the perfect spot to catch the game with friends. Enjoy breakfast, lunch, or dinner—seven days a week, from Monday to Sunday.



DISCOUNTED VENUE HIRE

Whether you wish to entertain three or 300, we are able to provide a choice of fully catered venues that are sure to meet your needs. Members receive up to 30% discount on venue hire.



For more information, contact
Events@killarneycc.co.za
Banqueting@killarneycc.co.za
Call: 011 442 7411



K I L L A R N E Y
C O U N T R Y C L U B

60 Fifth Street, Houghton, 2198

Johannesburg

011 442 7411

www.killarneycountryclub.co.za

